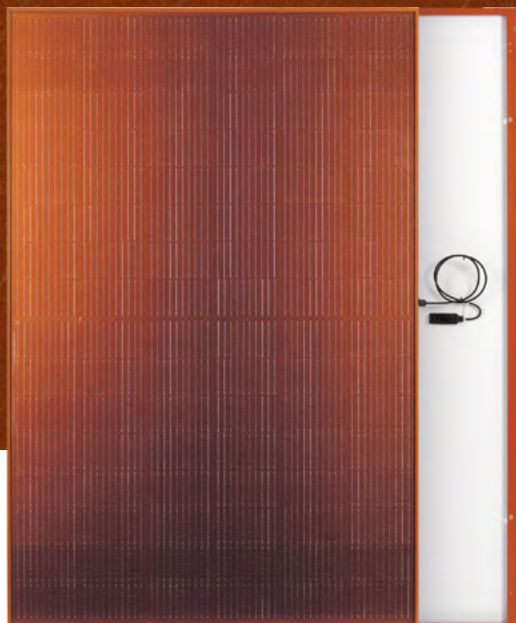


Silk[®] Nova Orange



400 W n-type

Maximum power

Technology inside

KEY BENEFITS AND FEATURES



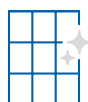
Power **400 Watt**



96 G12R HC **n-type** half-cut cells



Orange-terracotta colored glass and frame for special architectural requirements (similar to RAL 8007)*



Coloured coated glass for a **consistent appearance over time**



Perfect for traditional **roofs with terracotta tiles** and historical areas



1762 x 1134 x 30 mm

Performance guarantee

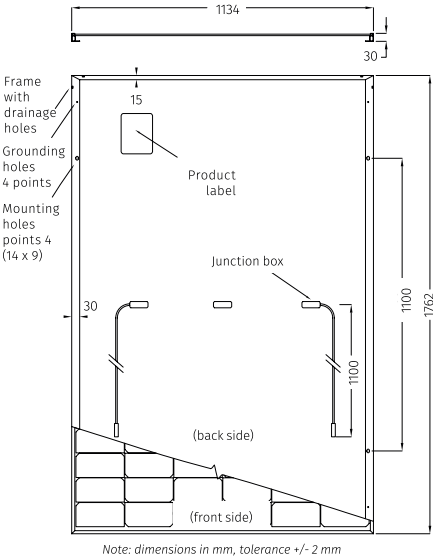
- **25-years** performance warranty with max power decrease from 2nd year **0.4%/year**
- **99%** at the end of first year
- **92%** at the end of 20th year
- **89%** at the end of 25th year

Product guarantees

- **15-year** product warranty
- Third-party product **liability** insurance
- All FuturaSun's modules are designed and guaranteed by the **Italian** headquarters

Mechanical Specifications

Dimensions	1762 x 1134 x 30 mm
Weight	21.3 kg
Glass	Orange coated, Low iron, Tempered, ARC, Thickness 3.2 mm
Cells	96 monocrystalline half-cut MBB n-type cells 182 x 105 mm
Frame	Varnished anodized aluminium frame with mounting and drainage holes
Junction boxes	Certified according to IEC 62790, IP 68 approved, 3 bypass diodes
Cables	Solar cable, length 1100 mm or customized assembled with 4mm² compatible connectors
Backsheet	Composite Multilayer film
Maximum reverse current (Ir)	25 A
Maximum system voltage	1000 V (1500 V on request)
Mechanical load (snow)	Design load: 3600 Pa, (5400 Pa including safety factor 1.5)
Mechanical load (wind)	Design load: 1600 Pa, (2400 Pa including safety factor 1.5)



Electrical data - STC*

FU 400 M

Sorting tolerance	W	0/+5
Module power (Pmax)	W	400
Open circuit voltage (Voc)	V	35.55
Short circuit current (Isc)	A	13.38
Maximum power voltage (Vmpp)	V	30.70
Maximum power current (Impp)	A	13.03
Module efficiency	%	20.02

Electrical data - NOCT**

FU 400 M

Module power (Pmax)	W	301
Open circuit voltage (Voc)	V	33.79
Short circuit current (Isc)	A	10.80
Maximum power voltage (Vmpp)	V	28.58
Maximum power current (Impp)	A	10.52

Temperature ratings

Temperature coefficient Isc	%/°C	0.045
Temperature coefficient Voc	%/°C	-0.28
Temperature coefficient Pmax	%/°C	-0.29
NOCT**	°C	45
Operating temperature	°C	from -40 to +85

Certifications

Factory	ISO 9001 - 14001 - 45001
Product	Class 1 UNI9177

Packaging

Quantity / Pallet	36 pcs
Container 40' HC	936 pcs / 26 pallets

The information included in this module datasheet is subject to change without notice and is provided for informational purposes only. No contractual rights are established or should be inferred because of user's reliance on the information contained in this module datasheet. Please refer to the appropriate module user guide and module product specification document for more detailed technical information regarding module performance, installation and use.

*Standard Test Conditions STC: 1000 W/m² - AM 1.5 - 25 °C - tolerance: Pmax (±3%), Voc (±4%), Isc (±5%)
**Nominal Operating Cell Temperature NOCT: 800 W/m² - T=45 °C - AM 1.5